

First Stone

First Stone is an experimental international research programme that explores the potential of Portuguese Stone. Centred on the unique physical and visual characteristics of the various types of stone found across Portugal's landscape, First Stone intersects production and design through the development of innovative applications for this exceptional material, highlighting its quality as well as the vast industry that is connected to its extraction and transformation.

Over 2016 and 2017, First Stone accomplished 3 central research and development projects – Resistance, Still Motion and Common Sense – which were materialized through exhibitions and presentations in Venice, Milan, Weil am Rhein, São Paulo, London and New York. Inviting some of the most resounding names from the fields of design and architecture, these projects are a tribute to the extraordinary versatility of this ageless resource.

Remaining true to its objective of revealing the possibilities of Portuguese Stone as well as the sociocultural context that it encapsulates, First Stone is developing new projects for 2019 and 2020 with architects and designers, as well as broadening its scope into the visual arts with the contributions of prominent contemporary artists. Focussing on all stages and dimensions of this material as well as its impact on the environment, these new projects also explore unconventional approaches, reinventing stone through the use of other materials and alternative concepts. The next projects will be presented in Venice, Paris and New York, as well as a formative exhibition in Lisbon, showcasing all of the projects and pieces developed so far.

Resistance

Amanda Levette
Bijoy Jain
Eduardo Souto de Moura
Elemental
João Luís Carrilho da Graça
Mia Hägg
Paulo David
Studio MK27
Studio Mumbai
Vladimir Djurovic

Common Sense

Claudia Moreira Salles
Estudio Campana
Fernando Brizio
Jasper Morrison
Michael Anastassiades
Miguel Vieira Baptista
Ronan & Erwan Bouroullec

Mint Street

Michael Anastassiades

Still Motion

Ian Anderson
Jonathan Barnbrook
Jorge Silva
Pedro Falcão
Sagmeister&Walsh
Peter Saville

Adding to these presentations, the work created in the scope of this programme is incorporated into an active communication and awareness campaign, which includes a comprehensive website, an ongoing documentary film series, 3 mobile apps that have been purposely developed to expand its reach and the launch of a book.

Michael Anastassiades Studio

Primeira Pedra

First Stone

Mint Street

WWW.PRIMEIRAPEDRA.COM

PROMOTOR



DESIGNED, CURATED AND PRODUCED BY

(experimentadesign)



COFINANCED BY



WITH THE COLLABORATION OF



SUPPORT



TECHNICAL SUPPORT

STONE SUPPLIER AND PRODUCTION

Mármore Galvão, Dimpomar

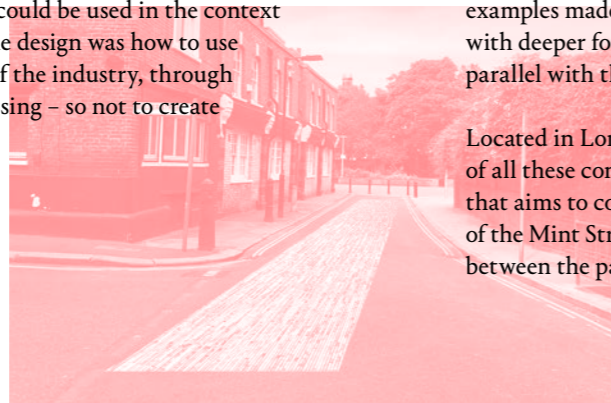
WITH THE HIGH PATRONAGE OF HIS EXCELLENCY THE PRESIDENT OF THE PORTUGUESE REPUBLIC, MARCELO REBELO DE SOUSA

A Landmark Project for London Design Festival 2018

Michael Anastassiades Studio Mint Street 2018

As part of the Primeira Pedra / First Stone programme and integrated into the London Design Festival 2018 Landmark Projects, Mint Street is a stone paving intervention by Michael Anastassiades, devised for a secluded street in London, using a variety of Portuguese marble.

As a starting off point Michael Anastassiades was asked to consider how off-cuts and discarded remains, of otherwise perfect marble, could be used in the context of a road. The challenge of the design was how to use recycled stone, a byproduct of the industry, through minimal cost effective processing – so not to create additional waste.



The resulting design of the section makes reference to different types of traditional cobbles, seen throughout Portugal from where the stone is quarried. Predominantly made from limestone and sculpted into square-shaped pieces to form patterns, these cobbles were similarly rendered from unusable material but through the laborious task of forming each stone by hand. The variety of Portuguese cobblestones also includes some less frequent examples made out of schist and placed vertically with deeper foundations, an example which creates a clear parallel with the piece presented by Michael Anastassiades.

Located in London's Borough of Southwark, the effect of all these combined elements creates a stone carpet that aims to contribute to the urban landscape of the Mint Street Park area whilst creating a new connection between the park and it's surrounding neighbourhood.



Michael Anastassiades

A designer who creates work with an enduring quality by focusing on proportion, the honest use of materials, and the physical presence of an object. Positioned between fine art and design, his work aims to provoke dialogue, participation and interaction. Michael Anastassiades launched his studio in 1994 followed by his eponymous brand in 2007. In the years since, the company has produced a desired and unique collection of lighting, furniture, and objects. This has led to many successful collaborations with brands such as Flos, Herman Miller, Saltoni, Puiforcat, B&B Italia, Cassina, Fantini, Lobmeyr, Dansk Møbelkunst and Svenskt Tenn.

Primeira Pedra

First Stone

“I wanted to create a simple gesture that used the natural beauty of Portuguese Rosa marble along with other distinctive tonalities. Similarly to how a carpet delineates a space or marks a path, I imagined the tiled road rolling out on the street, connecting the park to the remaining neighbourhood.”

Michael Anastassiades

“One of the unique characteristics of this project originates from the fact that it recycles marble through an intervention that underlines the environmental sustainability of this industry when linked to design and creativity. The other is the fact that it is a permanent gift to London, its citizens and visitors, contributing to the quality of the urban landscape of this city.”

Guta Moura Guedes, *President of experimentadesign*

“Much of marble quarried is rejected as imperfect by contractors, architects and designers. It is a scandalous waste of a beautiful raw material. This project shows what can be done by creating a new permanent street of rejected marble.”

Ben Evans, *Director of London Design Festival*

Dimensions

27m x 2m / 54m²

Marble Stones

Azul Lagoa
Creme com Veios Castanhos
Creme com Veios Rosa
Creme com Veios Verdes
Rosa Aurora
Rosa com Veios Verdes
Ruivina Escuro

Stone Supplier and Production

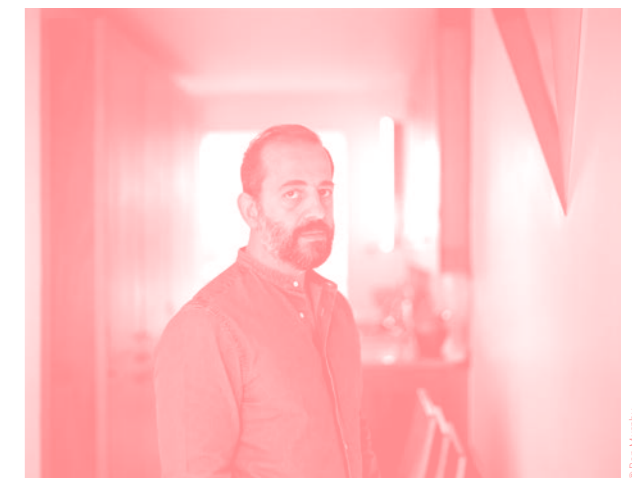
Dimpomar
Mármore Galvão

“This is a wonderful and unique project that captures the essence of what we are trying to do in Southwark, which is make our streets more appealing and create interesting landmarks and sights that people want to walk or cycle among. We want to help create streets that people want to walk down and enjoy, and encourage healthier and environmentally friendly forms of transport.”

Cllr Richard Livingstone, *Cabinet Member for Environment, Transport Policy and Air Quality*

“The identity of Portuguese Stone continues to stand today as a symbol of a truly incredible universe that, extracted from mother Earth, has accompanied the evolution of time and shown itself in the details of everyday life. Starting today it will also be a part of Mint Street.”

Miguel Goulão, *Executive Vice President of Assimagra*



Opened 31 October 2018
Permanent Installation
Mint Street, London, SE1 1QX